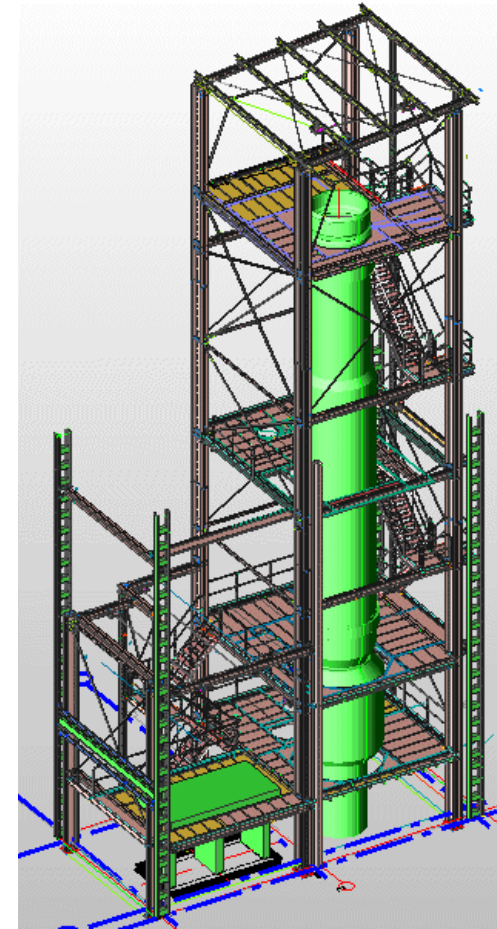


Industrial tower for AB “Pieno Žvaigždės”

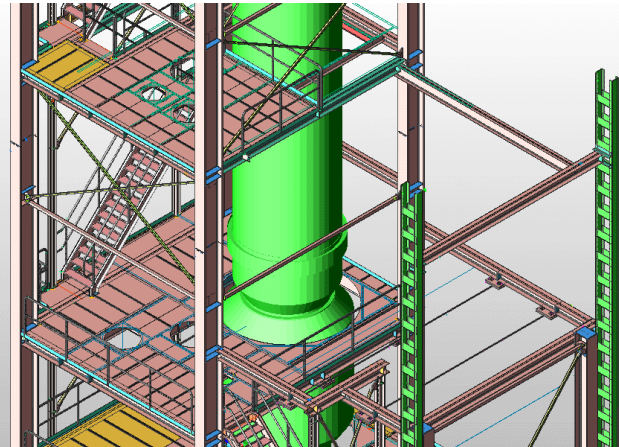
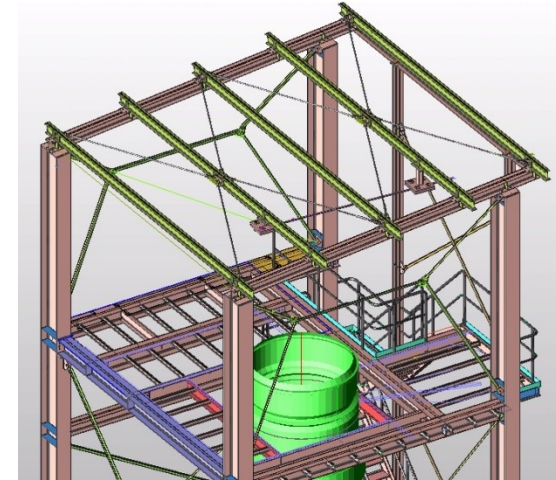
This industrial tower is designed for production unit of “Pieno Žvaigždės”, specializing in milk products.

The tower is a part of large system, which used for technological line of drying process of powdered milk. Tower has 70 tons of steel and it will be built in Pasvalys city (Lithuania), at beginning of 2008



Industrial tower for AB “Pieno Žvaigždės”

Advance Steel helped in creation and visualization of the 3D model and automatic creation of workshop drawings.



About PST company:

Founded in 1957 and has 1421 employees
Specialized in construction industry and project management
Team of construction designers consists of 20 members
Have 6 Advance Steel seats + 3 Advance Concrete seats.
Important other projects: 10 large projects done in 2007,
like Production buildings, Sport arena, Multifunctional complex

More information on www.pst.lt.

PST