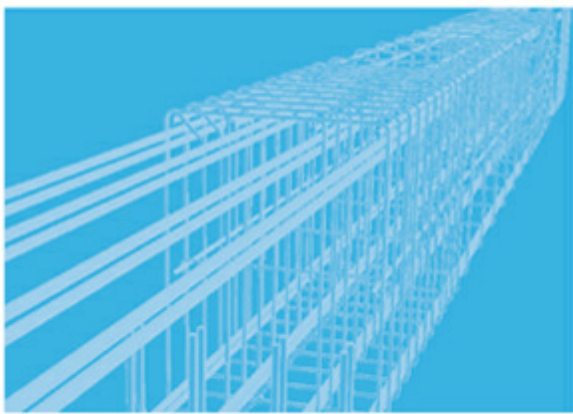




© 2010 Graitec. All rights reserved. Architecture: Studio: Los Angeles



GRAITEC
ADVANCE

WHAT IS NEW
in
Advance Concrete 2010

 **GRAITEC**

www.graitec.com

TABLE OF CONTENTS

TECHNOLOGY	4
Techno 1: AutoCAD 2010 compliancy	4
Techno 2: Revit compliancy	4
Techno 3: Speed optimization.....	6
REINFORCEMENT DRAWINGS.....	7
Reinf 1: Modification management	7
Reinf 2: Bar mark behavior.....	8
Reinf 3: UK localization	9
Reinf 4: Distribution using formula: 5x10 ?x20 5x10	9
Reinf 5: Non scheduled lengths	10
Reinf 6: Rounding bar lengths to the nearest value	10
Reinf 7: L shaped symbol arrows.....	11
Reinf 8: Bending details improvement	11
DYNAMIC REINFORCEMENT	12
Dyn 1: Correction of rounding issues.....	12
Dyn 2: New ergonomics	13
Dyn 3: Copy dynamic reinforcement.....	14
NEW FLEXLM PROTECTION.....	14
New Flexlm protection	14

TECHNOLOGY

Techno 1: AutoCAD 2010 compliancy

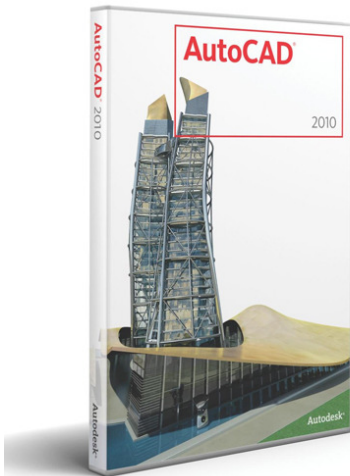
This functionality is available in all packages.

→ Version 2010 is compatible with the following Autodesk platforms:

AutoCAD 2006, 2007, 2008, 2009, 2010

ADT 2006, 2007

AutoCAD Architecture 2008, 2009, 2010



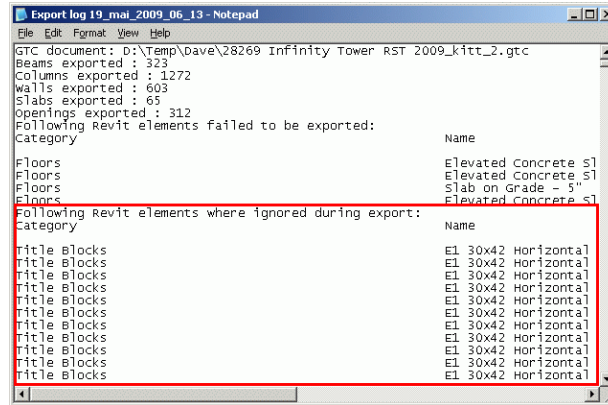
Techno 2: Revit compliancy

This functionality is available in all packages.

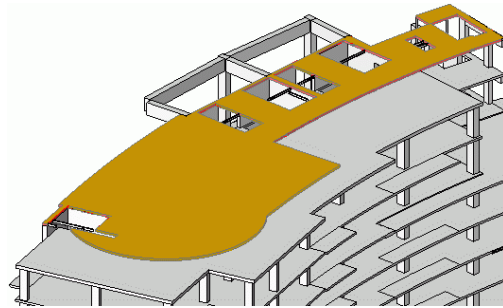
→ The compliancy with Autodesk Revit Structure has been improved:



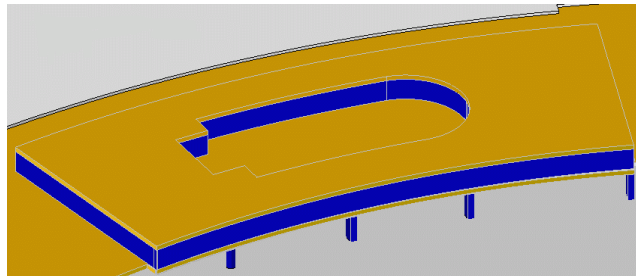
- The Revit plug-in export command creates a detailed report of Revit elements not written to the BIM file.



- Slab openings and curved slabs are imported with their exact shape, at the correct altitude.



- Ramps are taken into account.
- It is possible to correctly import arc walls, sloped walls and foundation piles.



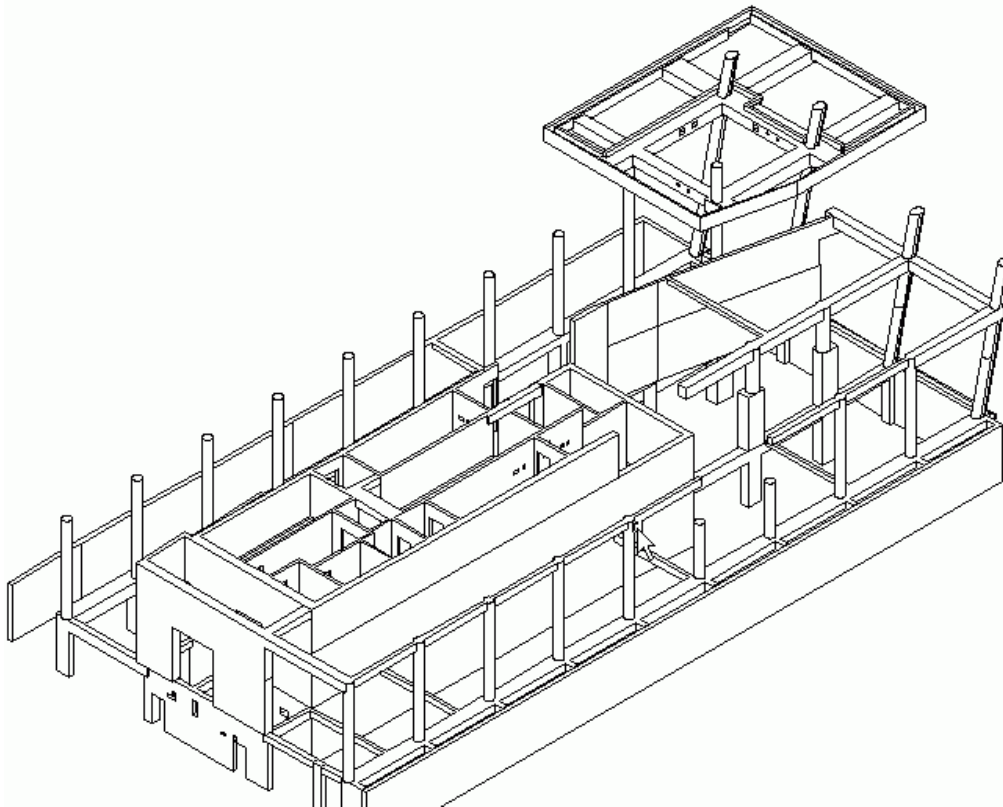
- Columns position is well preserved.

Techno 3: Speed optimization

This functionality is available in all packages.

→ The speed of the creation of views has increased.
The following is a comparison between **Advance Concrete 2009** and **Advance Concrete 2010** regarding the time for drawing calculation:

	2009	2010
View: Isometric	46.7 s	11.6 s
View: Section C-C	24.9 s	6.0 s
View: Section A-A, Section B-B	124.5 s	22.4 s



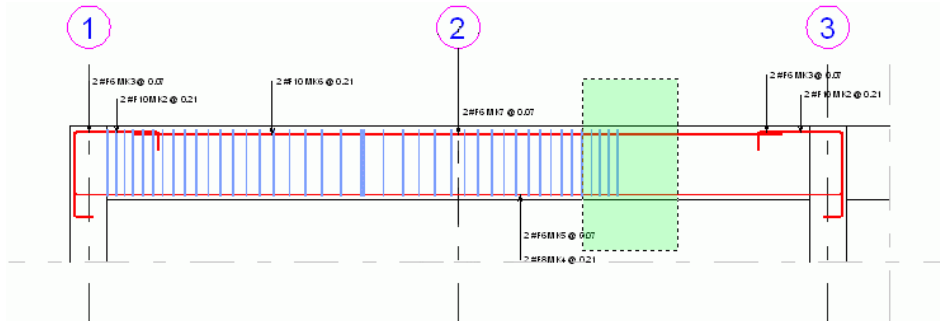
REINFORCEMENT DRAWINGS

Reinf 1: Modification management

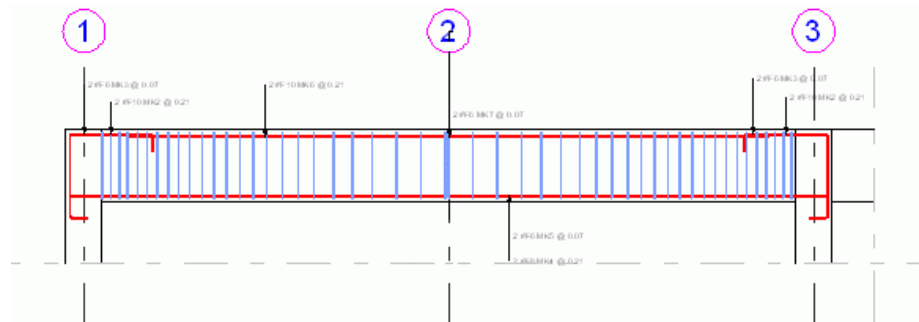
This functionality is available in all packages.

→ The AutoCAD stretch command is well applied on linear distributions.

Select objects:



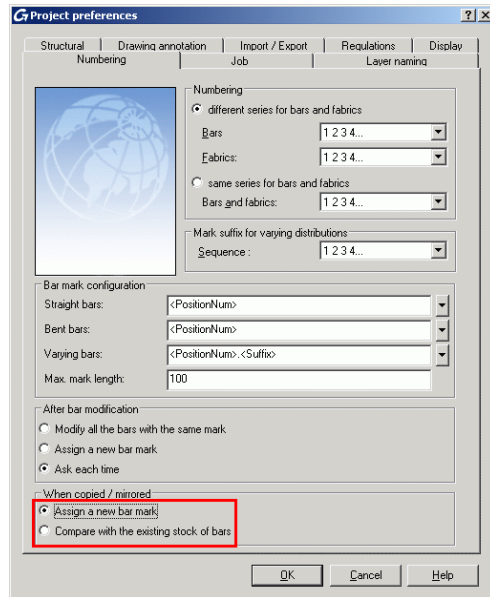
And the result is:



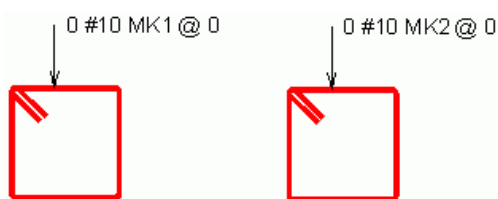
Reinf 2: Bar mark behavior

This functionality is available in all packages.

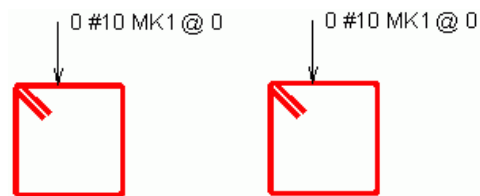
→ New options in the project preferences allows selecting the bar mark behavior when creating new objects using “Copy”, ‘Mirror” or Advance Concrete creation tools.



- A new bar mark is assigned for each new identical entity.



- Identical entities receive the same bar mark.

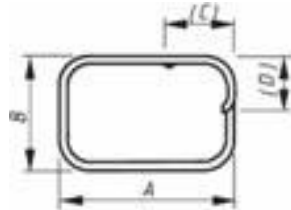


Reinf 3: UK localization

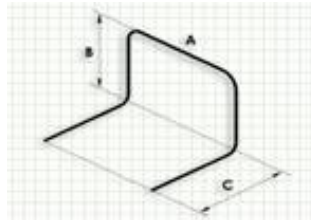
This functionality is available in all packages.

→ Improvements to the British shape codes library:

- Corrections to shape codes 33, 47, 51, 56, 63, replacement of hooks by 'named' bar legs:



- A new bar shape for consoles

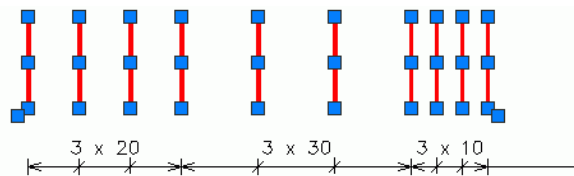
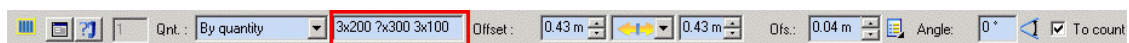


- Unknown bends are recognized as shape code '99'

Reinf 4: Distribution using formula: 5x10 ?x20 5x10

This functionality is available in all packages.

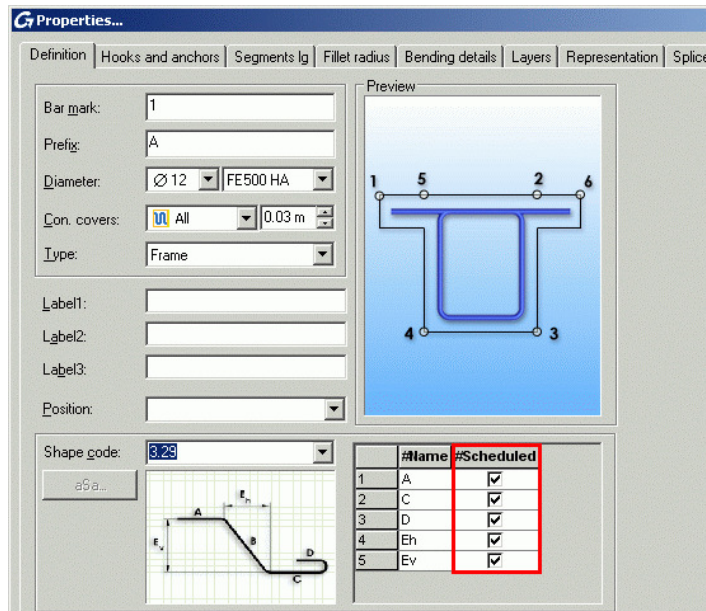
→ In a linear distribution the user can input several defined spacing (5x15 7x7...) and add an undefined value (?x20). This value will be automatically calculated according to the defined spacing and the distribution length.



Reinf 5: Non scheduled lengths

This functionality is available in all packages.

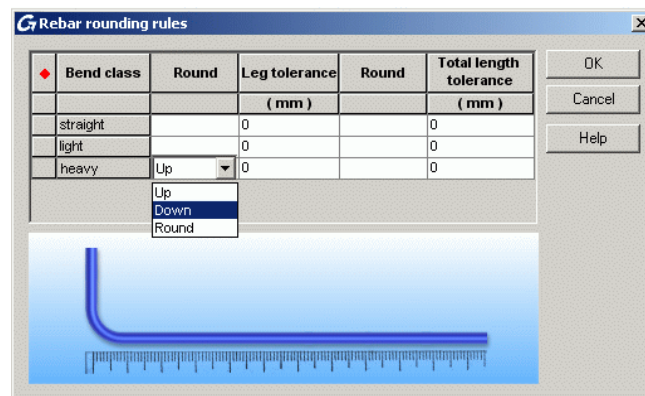
→ A new option to configure, from the bar definition property sheet, which optional legs will be displayed in the schedules:



Reinf 6: Rounding bar lengths to the nearest value

This functionality is available in all packages.

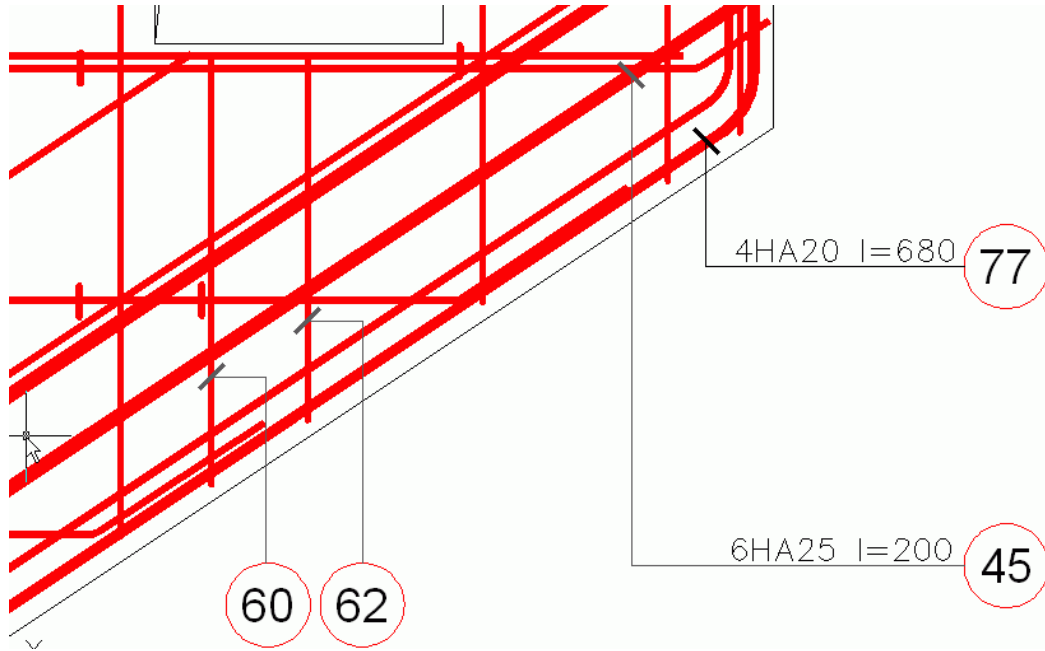
→ A new option in the rounding rules configuration dialog box: Leg or total lengths can be displayed rounded to the nearest tolerance step.



Reinf 7: L shaped symbol arrows

This functionality is available in all packages.

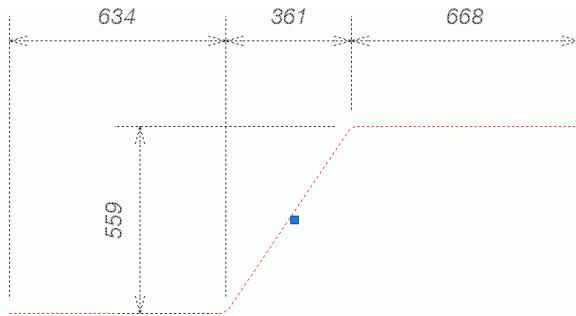
→ A new representation for bar symbol arrows is available to make the drawing easier to read.



Reinf 8: Bending details improvement

This functionality is available in all packages.

→ A new parameter allows defining the distance between the bar and the dimension lines on the bending details to get the perfect representation.



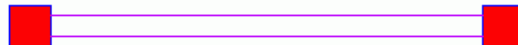
DYNAMIC REINFORCEMENT

Dyn 1: Correction of rounding issues

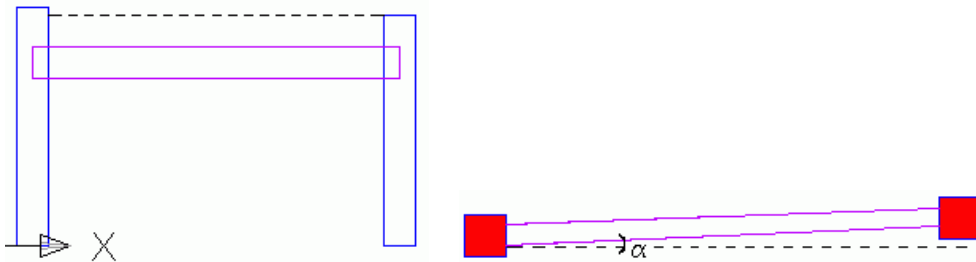
This functionality is available in the Professional and Premium packages.

→ When applying dynamic reinforcement solutions, Advance identifies similar structural elements ignoring also minor variations. For example:

Suppose there is a dynamic reinforcement solution for a beam between two columns with square section.



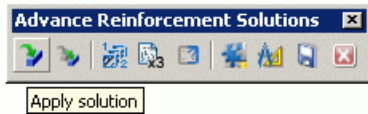
The software no longer tries to match the solution exactly, but it selects the best available match in the selected target and thus the dynamic reinforcement solutions can be applied if the columns are not exactly at the same level, or if the beam is slightly skewed.



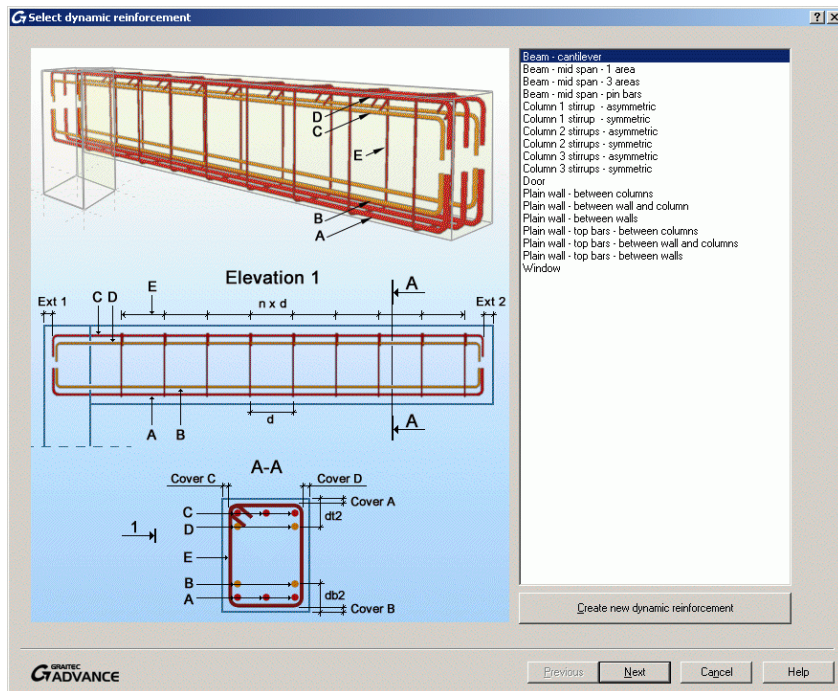
Dyn 2: New ergonomics

This functionality is available in the Professional and Premium packages.

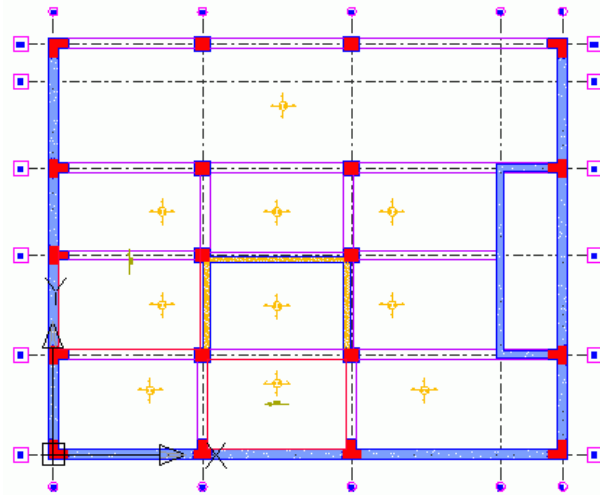
→ A new natural way to apply solutions to the model.



First the user selects the solution and specifies the parameters:



Then the user selects the target elements at each location where it can be applied.



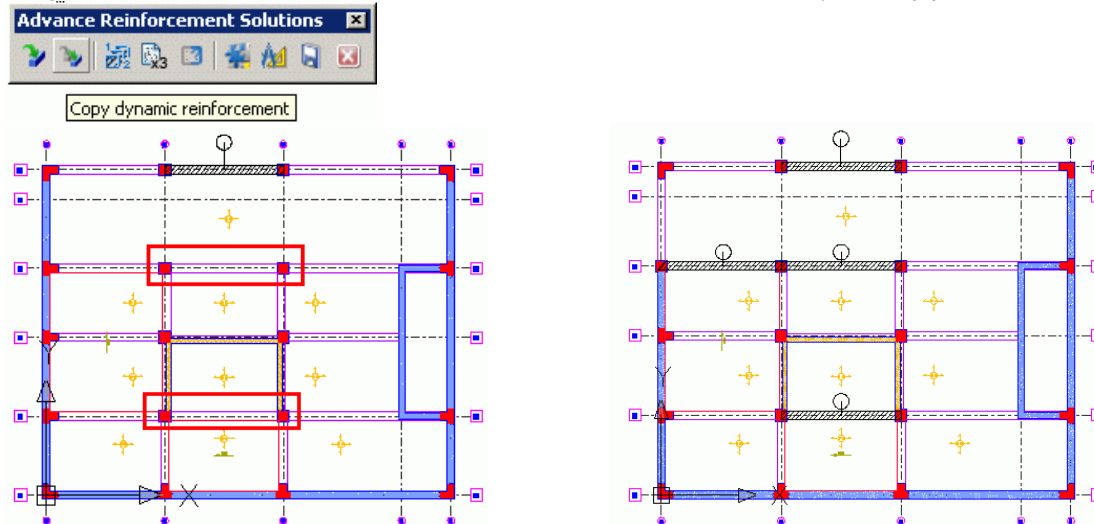
The software finds a place to apply it or displays an error.

Dyn 3: Copy dynamic reinforcement

This functionality is available in the Professional and Premium packages.

→ A new tool allows easier reuse of the applied reinforcement solutions, by copying the solution to the similar situations in the model. This tool provides also gains in productivity.

First, the user selects the reinforcement solution symbol, and then the target elements at each location where the solution may be applied.



NEW FLEXLM PROTECTION

New Flexlm protection

→ Advance Concrete 2010 use the latest Flexlm technology (Acesso).

- Speeds up license deliveries to end-users
- Can borrow a license from a network license server
- Easily move the license from one computer to another

Canada

GRAITEC Inc.

183, St. Charles St. W.
Suite 300
Longueuil (Québec) Canada
J4H1C8

Tel. (450) 674-0657
Fax (450) 674-0665
Hotline (450) 674-0657
Toll free 1-800-724-5678
Web <http://www.graitec.com/En/>
Email info.canada@graitec.com

Germany, Switzerland, Austria

GRAITEC GmbH

Centroallee 263a
D-46047 Oberhausen Germany
Tel. +49-(0) 208 / 62188-0
Fax +49-(0) 208 / 62188-29
Web <http://www.graitec.com/Ge/>
Email info.germany@graitec.com

United Kingdom

GRAITEC UK Ltd.

The Old Forge
Suth Road
Weybridge
Surrey KT13 9DZ
Tel. +44 (0)1932 858516
Fax +44 (0)1932 859099
Email sales@graitec.co.uk

Romania

GRAITEC Roumanie SRL

Str. Samuil Vulcan, Nr. 10 Sector 5
București, Romania
Tel. +40 (21) 410 0119
Fax +40 (21) 410 0124
Mobile 0729 002 107
Web <http://www.graitec.com/Ro/>
Email sales@graitec.ro

France

GRAITEC France Sarl

17 Burospace
91573 Bièvres Cedex
Tel. 33 (0)1 69 85 56 22
Fax 33 (0)1 69 85 33 70
Web <http://www.graitec.com/Fr/>
Email info.france@graitec.com

Czech Republic and Slovakia

AB Studio spol. s r.o.

Jeremenkova 90a 140 00 PRAHA 4
Tel. +420/244 016 055
Fax +420/244 016 088
Hotline +420/244 016 050
Web <http://www.abstudio.cz/>
Email abstudio@abstudio.cz

Russia

GRAITEC CJSC

Locomotivny Proezd 21, Build. 5,
Office 503
Moscow 127238 - Russia
Tel. +7(495) 225-13-65
Fax. +7(495) 488-67-81
Email info.russia@graitec.com